



Offline Forms

K2 smartforms New Feature

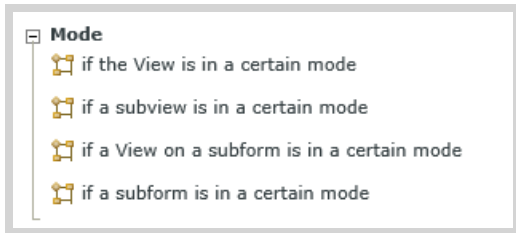
4.6.10

June 2015

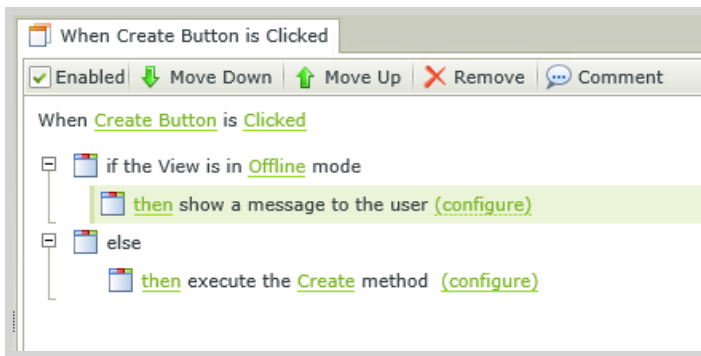


Offline Forms: Conditions Mode

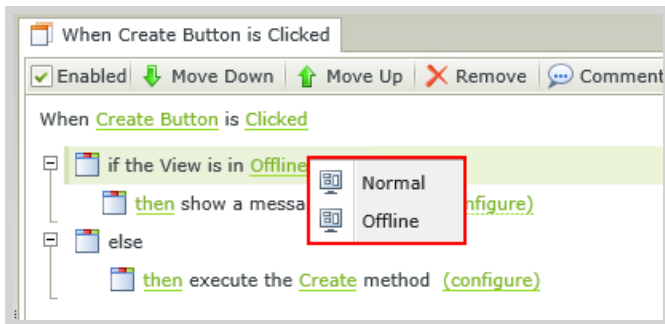
The Mode conditions allow the user to build rules around Views and Forms for when they are defined as Offline. K2 Mobile makes use of the behavior associated with the mode parameter set to Offline, and so can be used as the front-end for Forms. All other platforms will execute within Normal mode.



One example is where the device is offline when opening the Form in K2 Mobile, a message can be sent to inform the user of the offline status.



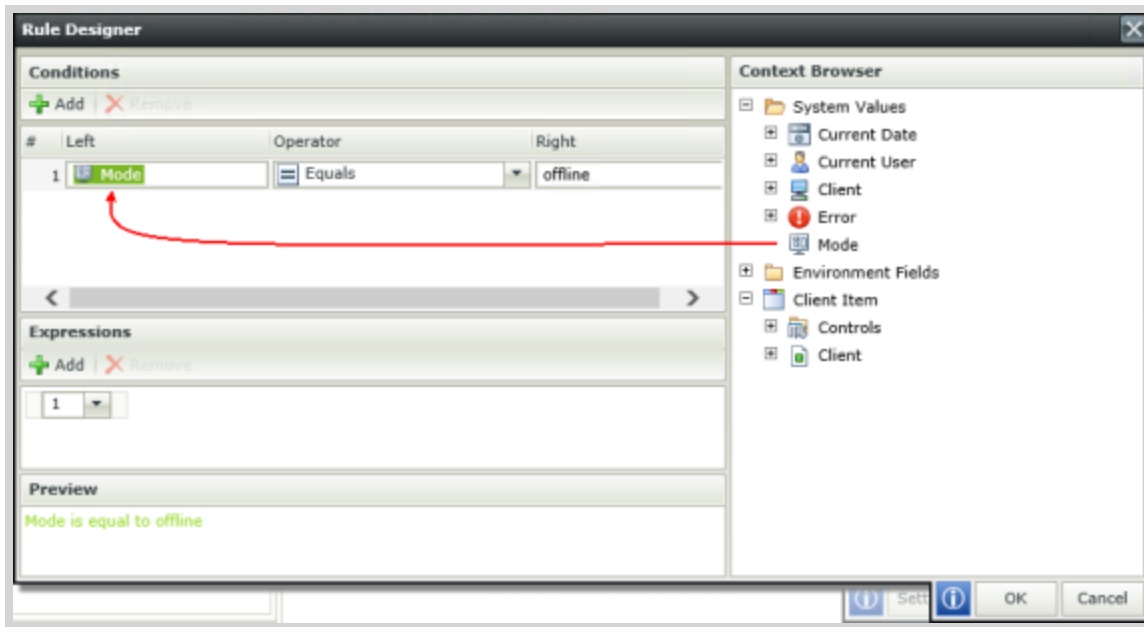
Permutations:



Normal - Forms and Views have full functionality and require a connection to the server.

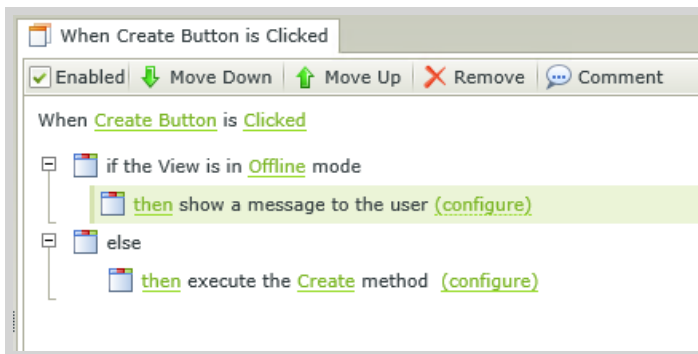
Offline - Forms and Views have limited functionality and work without a connection to the server.

Advanced conditions can also be created to check the mode status before executing an action by dragging the Mode from the System Values of the Context Browser.

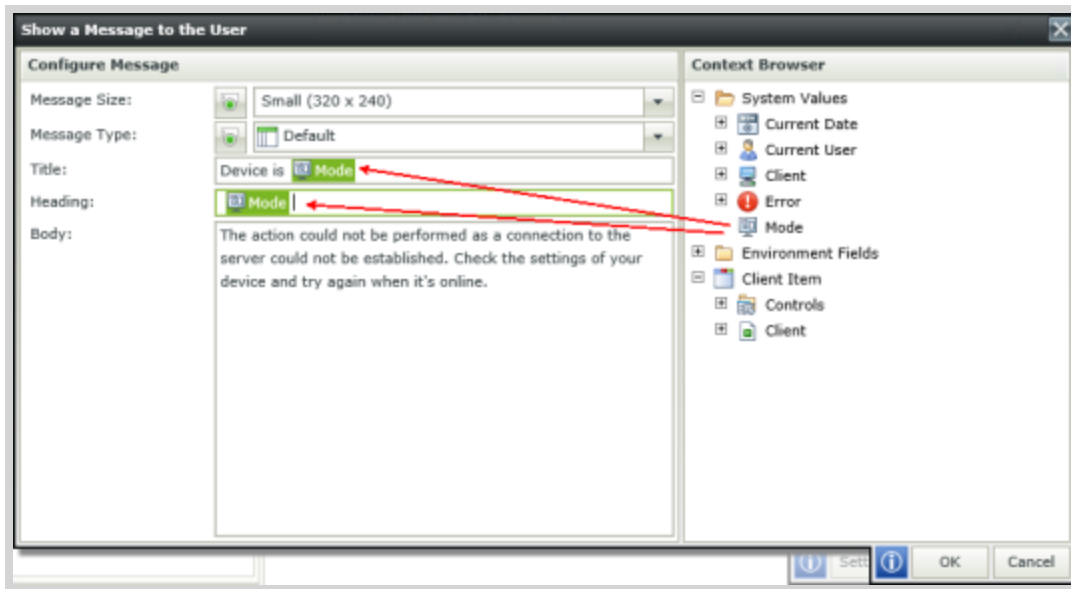


How to use a Mode condition

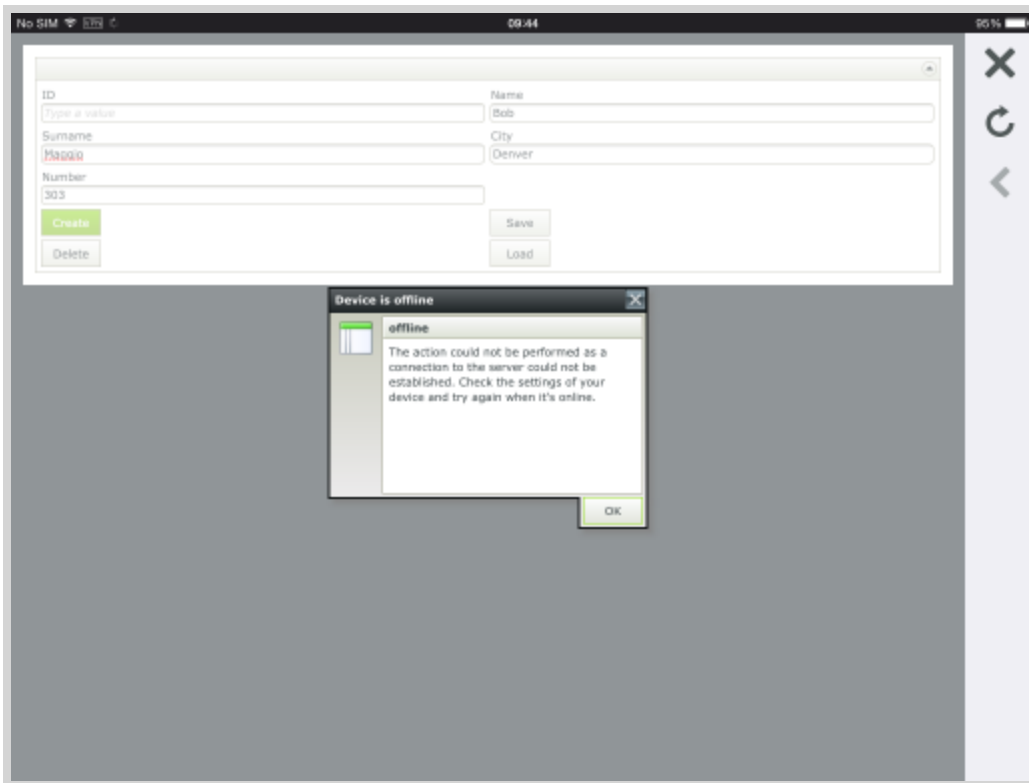
1. Create a SmartObject.
2. Create an Item View of the SmartObject containing a Create button.
3. Edit the When Create Button is Clicked rule and add the following condition and action:



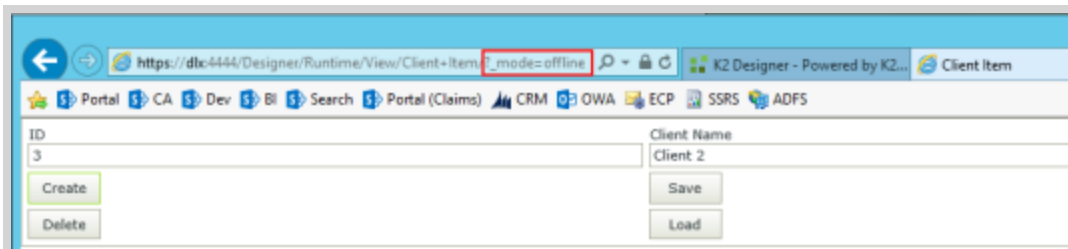
4. Configure the message as follows and drag the Mode from the Context Browser into the mail as shown below :



5. Save the rule and the View.
6. Add the View to a Form.
7. Set the Offline Availability setting in the Advanced section of the Form properties. This will enable the offline mode condition to execute when the Form is offline.
8. Set the Application Form setting in the Advanced section of the Form properties. This makes the Form available in the Forms folder of the K2 Mobile app.
9. Save the Form.
10. Move the Form to the System > Application Forms folder so that it is available as an application form in the K2 Mobile app.
11. Check in the View and Form.
12. Open the Form from the K2 Mobile app.
13. Change the settings in K2 Mobile to be offline.
14. Capture some data and click the Create button.
15. The message is displayed.



16. To test the rules before using it on the device, run the View and insert `?_mode=offline` into the query string (url) of the page as shown below:



Considerations

- The mode is determined by the mobile device's status when the Form is opened. For example if the mobile device is offline, the mode will be reflected as offline and Views and Forms will in turn be offline. If the mobile device's status change to offline while a user is capturing data for example, the information will be saved in the Outbox and submitted when the mobile is online again.
- The mode should not be confused with the Offline Availability setting of the Form properties. The Offline Availability setting in the Form properties needs to be set to enable the offline mode conditions to work for K2 Mobile.
- If a Form contains a View and the Form is offline, the View will inherit the offline setting. The same principle is applicable to subviews and subforms.
- When creating rules around the offline mode feature, it is important to note that only client side actions will execute when the mobile device is offline. Server side actions will NOT be available while the mobile device is offline.



- It may be a good idea to perform offline mode conditions and actions in a batch when the View/Form initializes to inform the user at that point already if the device is offline.



Terms of Use

Acceptance of Terms

THIS DOCUMENTATION IS SUBJECT TO THE FOLLOWING TERMS OF USE ("TOU"). SOURCECODE TECHNOLOGY HOLDINGS INC. RESERVES THE RIGHT TO UPDATE THE TOU AT ANY TIME WITHOUT NOTICE. THE MOST CURRENT VERSION OF THE TOU CAN BE REVIEWED BY CLICKING ON THE "TERMS OF USE" LINK IN THE TABLE OF CONTENTS.

Copyright

© 2008-2015 SOURCECODE TECHNOLOGY HOLDINGS, INC. ALL RIGHTS RESERVED. SOURCECODE SOFTWARE PRODUCTS ARE PROTECTED BY ONE OR MORE U.S. PATENTS. OTHER PATENTS PENDING. SOURCECODE, K2, K2 BLACKPEARL, K2 SMARTFORMS AND APPIT ARE REGISTERED TRADEMARKS OR TRADEMARKS OF SOURCECODE TECHNOLOGY HOLDINGS, INC. IN THE UNITED STATES AND/OR OTHER COUNTRIES. THE NAMES OF ACTUAL COMPANIES AND PRODUCTS MENTIONED HEREIN MAY BE THE TRADEMARKS OF THEIR RESPECTIVE OWNERS.

Third-Party Integration

SOURCECODE MAY MODIFY, ADJUST OR REMOVE FUNCTIONALITY IN THE K2 SOFTWARE IN RESPONSE TO CHANGES MADE TO VERSIONS OF THE RELEVANT MICROSOFT OR OTHER THIRD PARTY PRODUCTS. THIS DOCUMENTATION MAY PROVIDE ACCESS TO OR INFORMATION ON CONTENT, PRODUCTS, AND SERVICES FROM THIRD PARTIES. SOURCECODE TECHNOLOGY HOLDINGS INC. IS NOT RESPONSIBLE FOR AND EXPRESSLY DISCLAIMS ALL WARRANTIES OF ANY KIND WITH RESPECT TO THIRD-PARTY CONTENT, PRODUCTS, AND SERVICES.

Notice regarding content of this documentation

WHILE EFFORTS WERE MADE TO VERIFY THE COMPLETENESS AND ACCURACY OF THE INFORMATION CONTAINED IN THIS DOCUMENTATION, THE DOCUMENTS AND RELATED GRAPHICS CONTAINED IN THIS DOCUMENTATION COULD INCLUDE TECHNICAL INACCURACIES OR TYPOGRAPHICAL ERRORS. SOURCECODE TECHNOLOGY HOLDINGS INC. MAY MAKE IMPROVEMENTS AND/OR CHANGES IN THE DOCUMENTATION AT ANY TIME AND WITHOUT NOTICE. ERRORS AND INACCURACIES MAY BE REPORTED IN WRITING TO DOCUMENTATION@K2.COM